



Bramley Crescent, Ilford, IG2 6JS

Offers In Excess Of £300,000





Offers In Excess Of £300,000

Bramley Crescent

Ilford, IG2 6JS

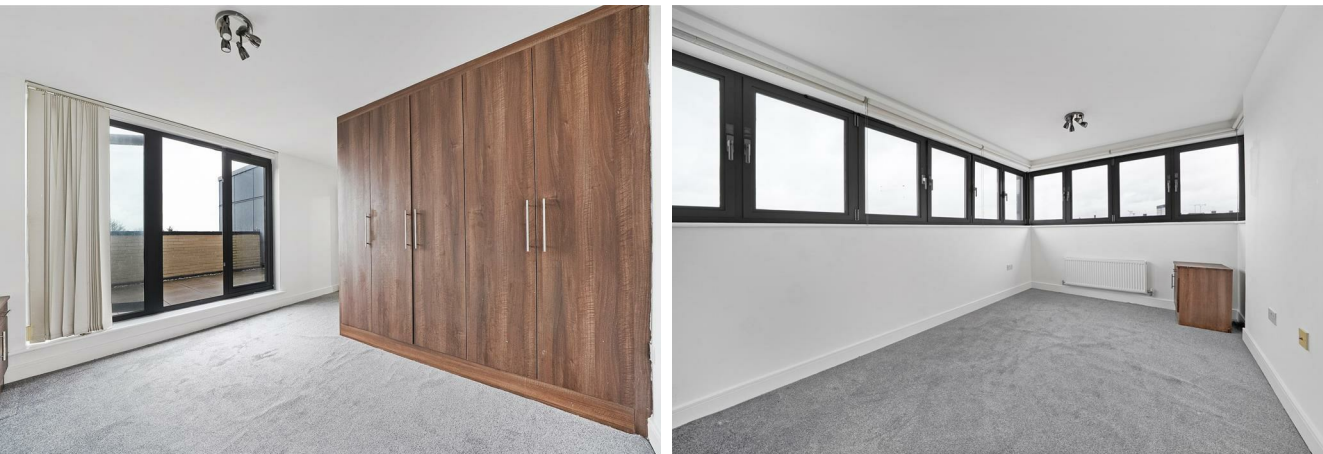
- Two Bedroom
- Open Planned living and kitchen
- Walking distance to Gants Hill Station
- Two Bathroom
- Close to schools and shops

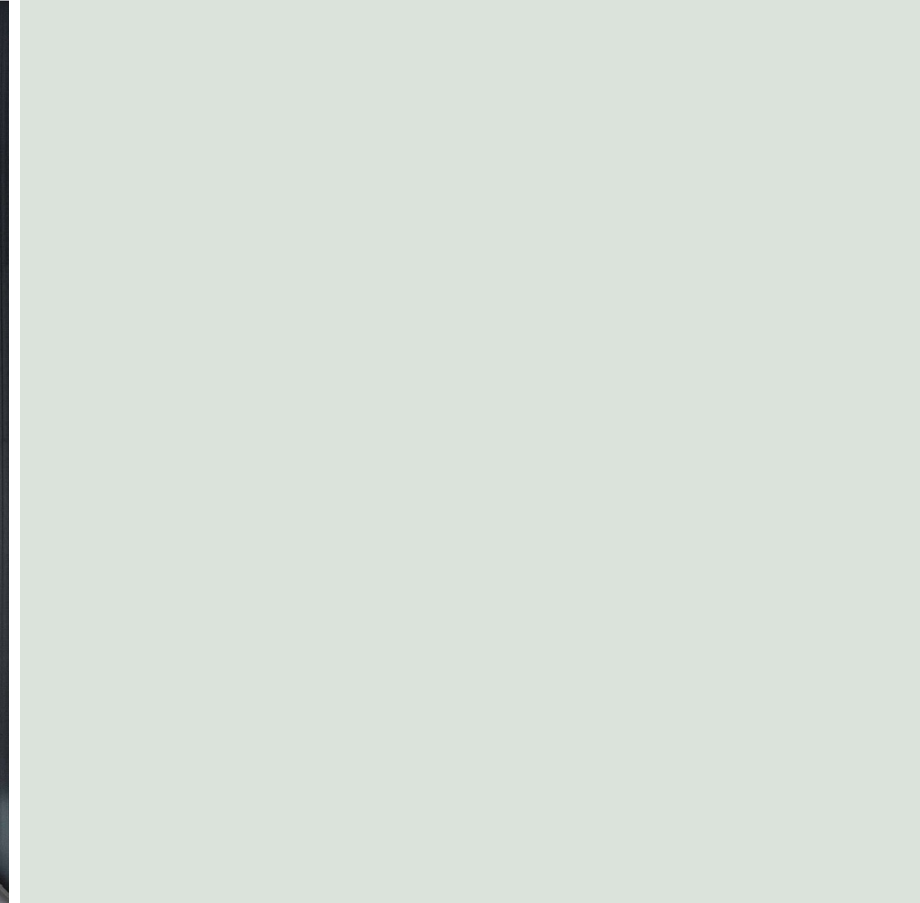
A two-bedroom, two bathroom apartment on the third floor of a modern development.

The apartment features a spacious reception room with open plan kitchen, two well-appointed bedrooms and two bathrooms and a balcony.

Excellent transport links with Gants Hill tube station (Central Line) being a short walk away and local buses provide regular links to the surrounding area.

In addition to its transport links, the area benefits from local amenities, including a variety of shops, bars, and restaurants.



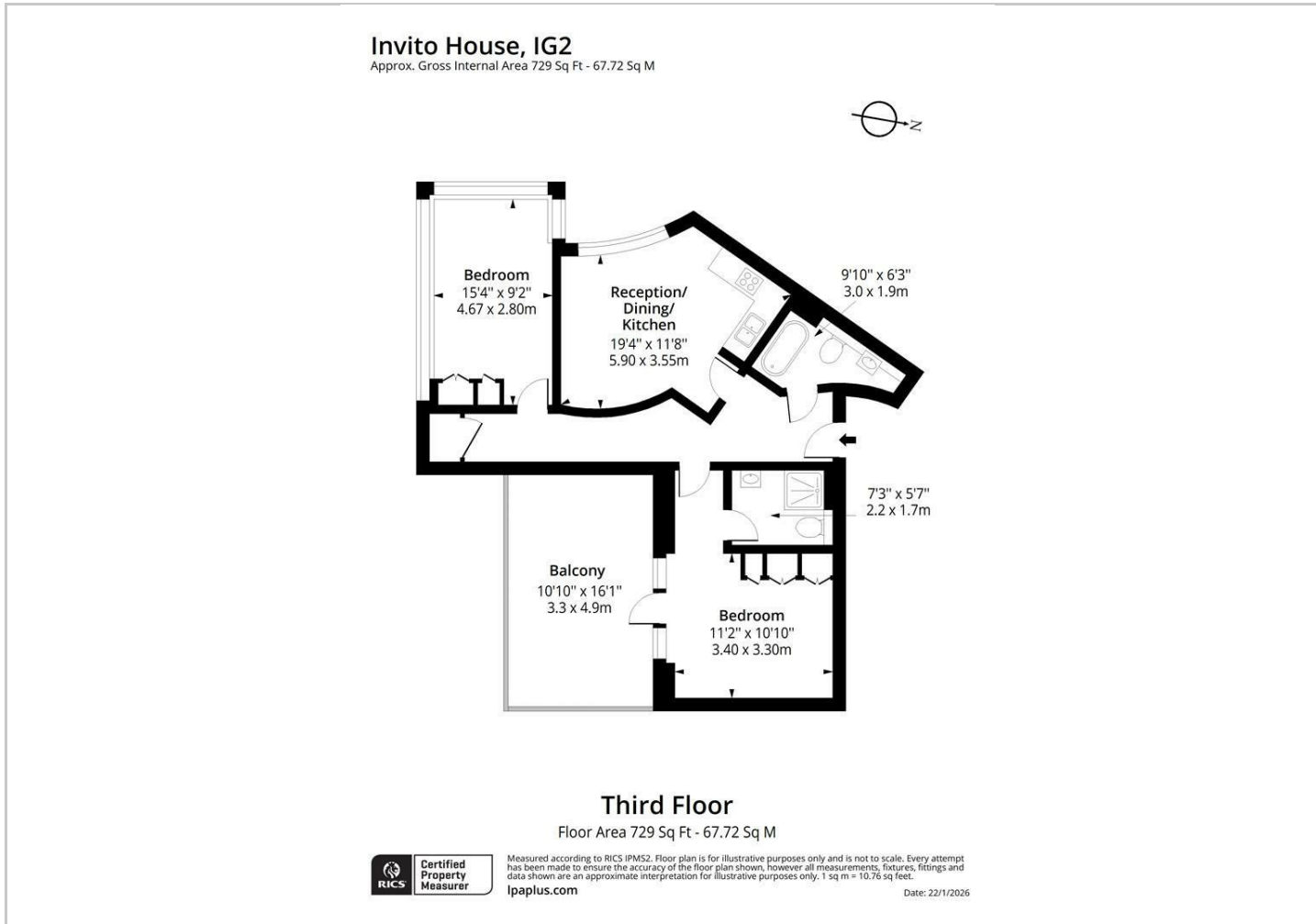


Directions

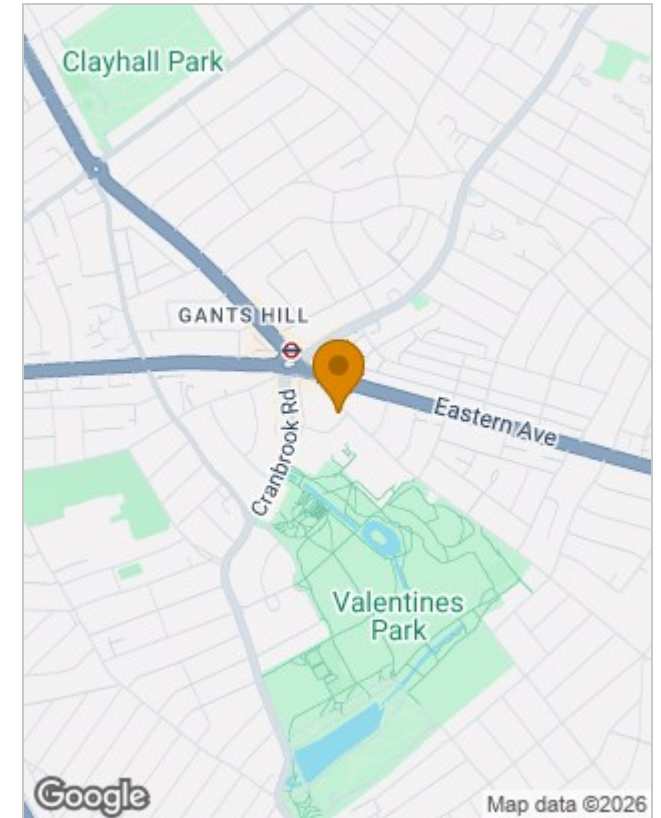




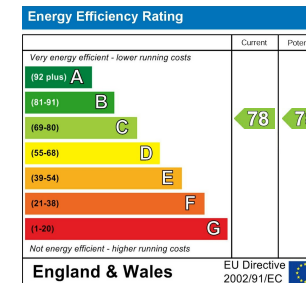
Floor Plans



Location Map



Energy Performance Graph



Viewing

Please contact our Redbridge Sales Office on 020 8551 0211 if you wish to arrange a viewing appointment for this property or require further information.

The particulars are set out as a general outline only for the guidance of intended purchasers or lessees, and do not constitute, any part of a contract. Nothing in these particulars shall be deemed to be a statement that the property is in good structural condition or otherwise nor that any of the services, appliances, equipment or facilities are in good working order. Purchasers should satisfy themselves of this prior to purchasing.